

# The setting direction for CABINET

There are 10 steps for the setting direction of the cabinet as follows. Please see the photo direction when setting it.

Firstly, please see the photo no.1 about the setting of the soleplate. And then the accomplished soleplate is displayed as in photo no.2.

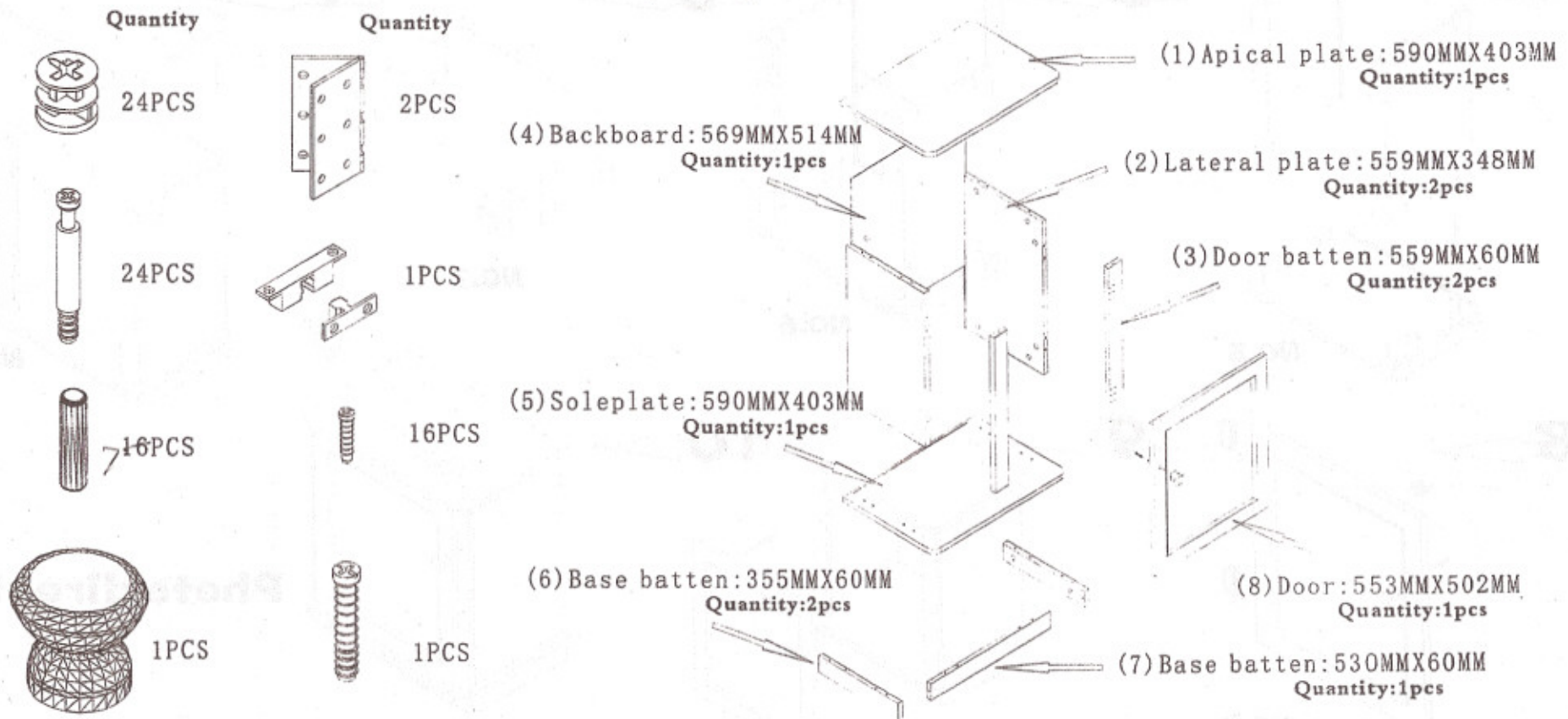
Secondly, please see the photo no.3 about the setting of the lateral plates. And then the both lateral plates are fixed successfully as in photo no.4.

The combination of the soleplate and the lateral plates is as in photo no.5. And then the backboard is put into the slot of the lateral plates as in photo no.6.

The setting of apical plate is as in photo no.7. And then the apical plate is fixed on the accomplished components as in photo no.8.

Finally, the setting of cabinet door is as photo no.9. And then the cabinet door is fixed on the relevant place as photo no.10.

## Spare part list



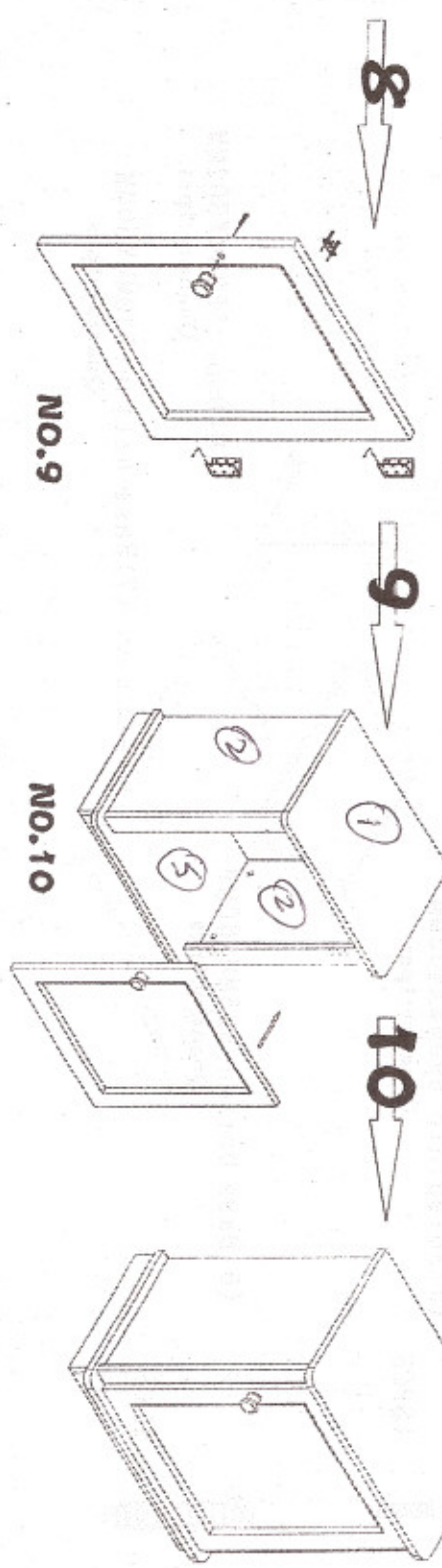
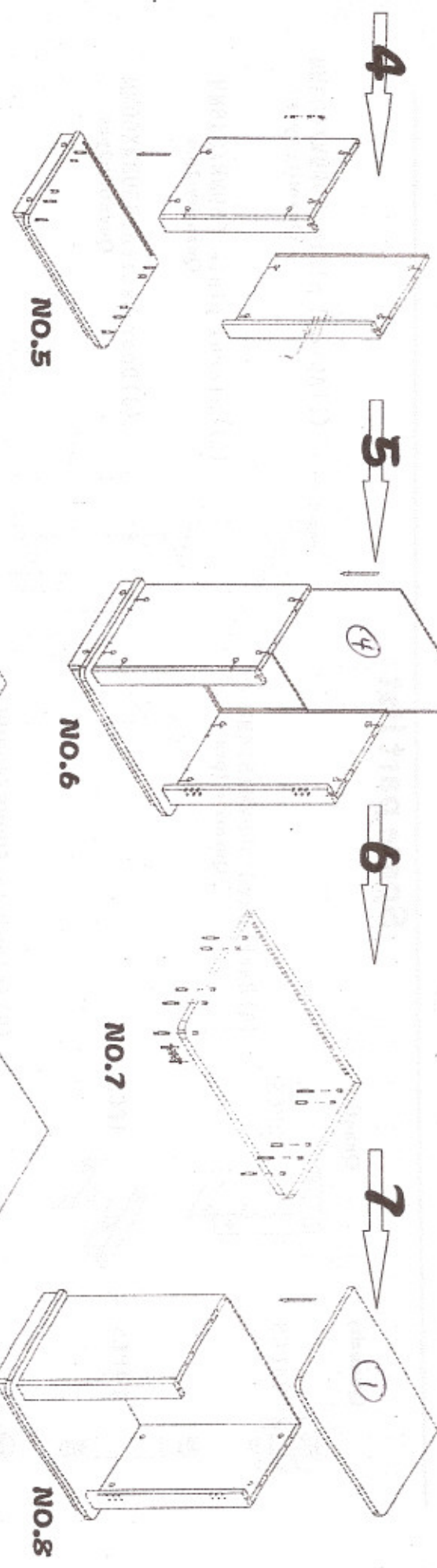
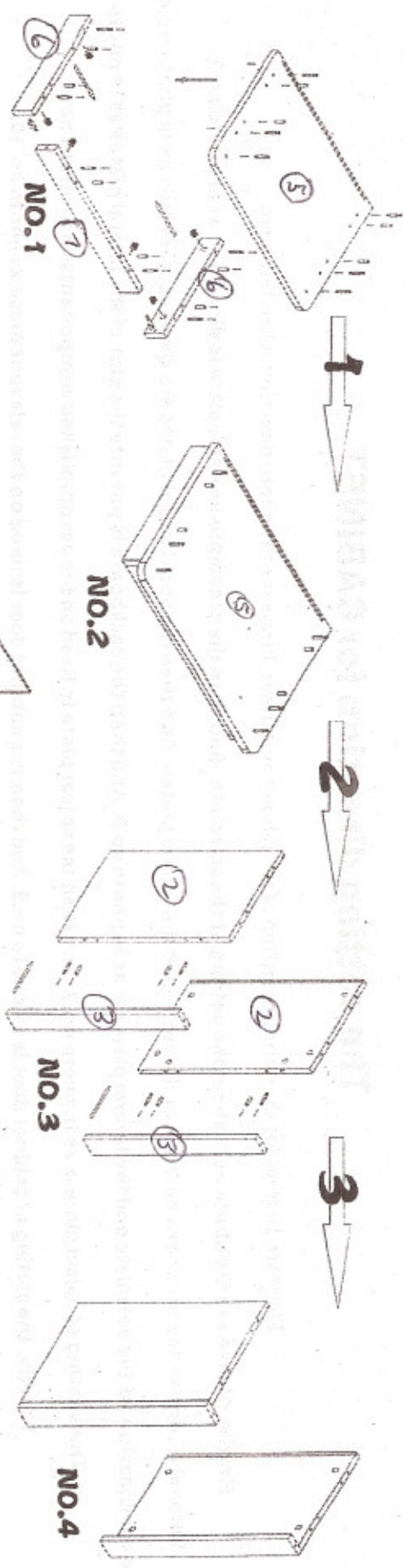


Photo direction